

TOO COMFORTABLE
+ ADD GANG SHOWER

MEN 1/2 PRIVATE

WOMEN 2/3 "

LARGER DRYING AREA

HOSE BIBS

SUITEMATE

NO TOWEL DROP

GROOMING

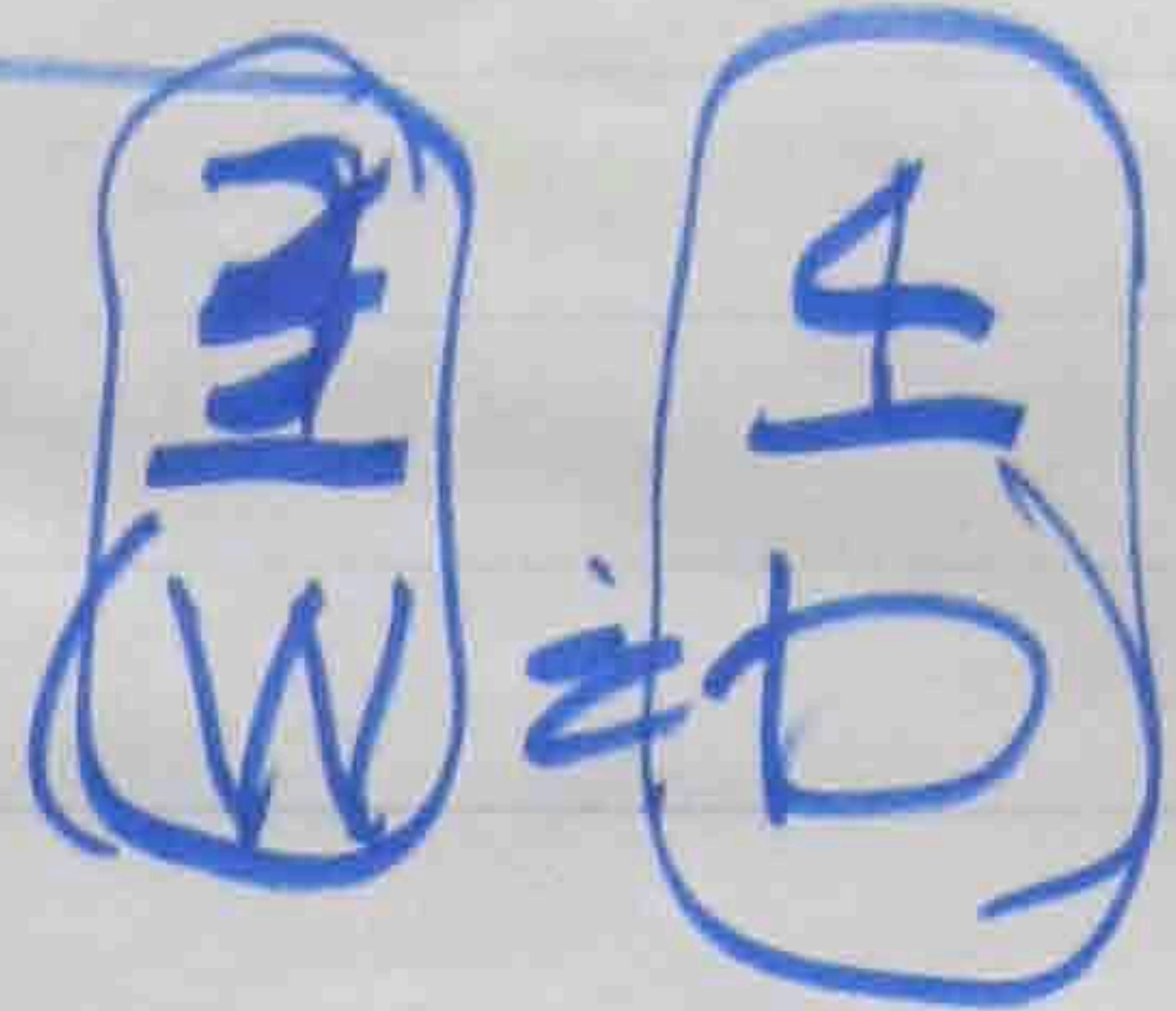
MEN - LIMITED

WOMEN - MORE W/ PLENTY OF POWER

LAUNDRY

PREFER ACCESS TO LOADING

EQUIPMENT QUANTITY



FOLDING/STORAGE

OUTSIDE SERVICE (BEYOND REC)

OF STAFF

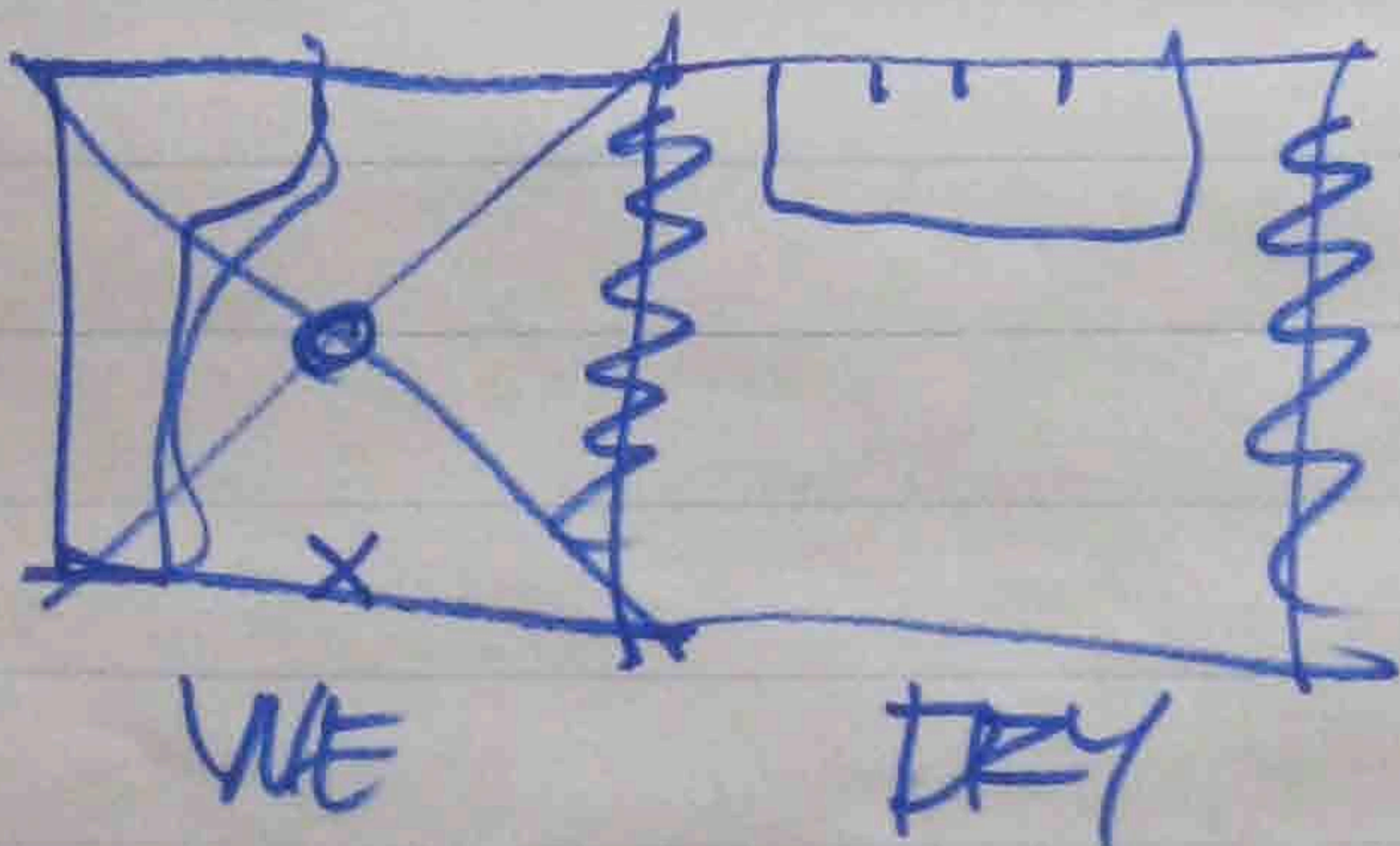
SERVICE ACCESS
TO EQUIPMENT
PLUMBING

STORAGE
CHEMICALS

15 gal
4 in use
4 in storage

DEEP SINK

DISCHARGE PUM



CARTS 3x3
9 at a time

FOLDING TABLE

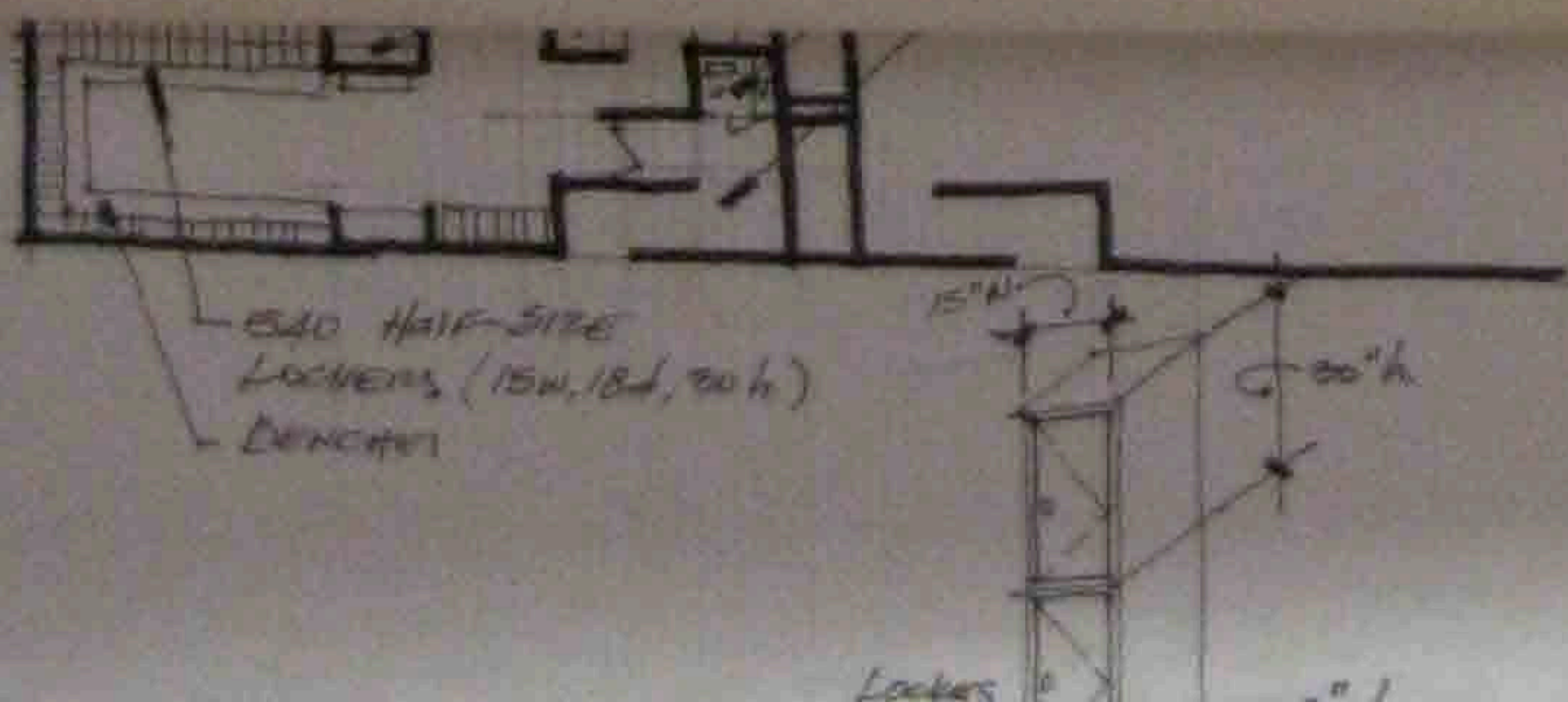
2 carts 2 people
folding space

6' WIDE X 6' LONG

SHELVING FOR
TOWELS

9 FT LONG 42" HIGH

OFFICE SPACE / WORKSPACE



EQUIPMENT CHECK OUT

EQUIPMENT TYPES
SERVICES
STAFF QUANTITY (2)
STORAGE

- ① BB Spreading
FB
VB
RB
Packets - goggles
yupropu
table len
Foam rollers

- ② TOWELS
- ③ LOCKS

LOCATE NEAR LOCKER ENTRANCE
IDEALLY NEAR LAUNDRY

NEED SPACE FOR ICE MACHINE
GO TO SELF SERVE?

BAND AIDS
LOST & FOUND
KEY CHECK OUT

- PROXIMITY
- check in
 - locker rooms
 - then courts.

P.E. EQUIPMENT

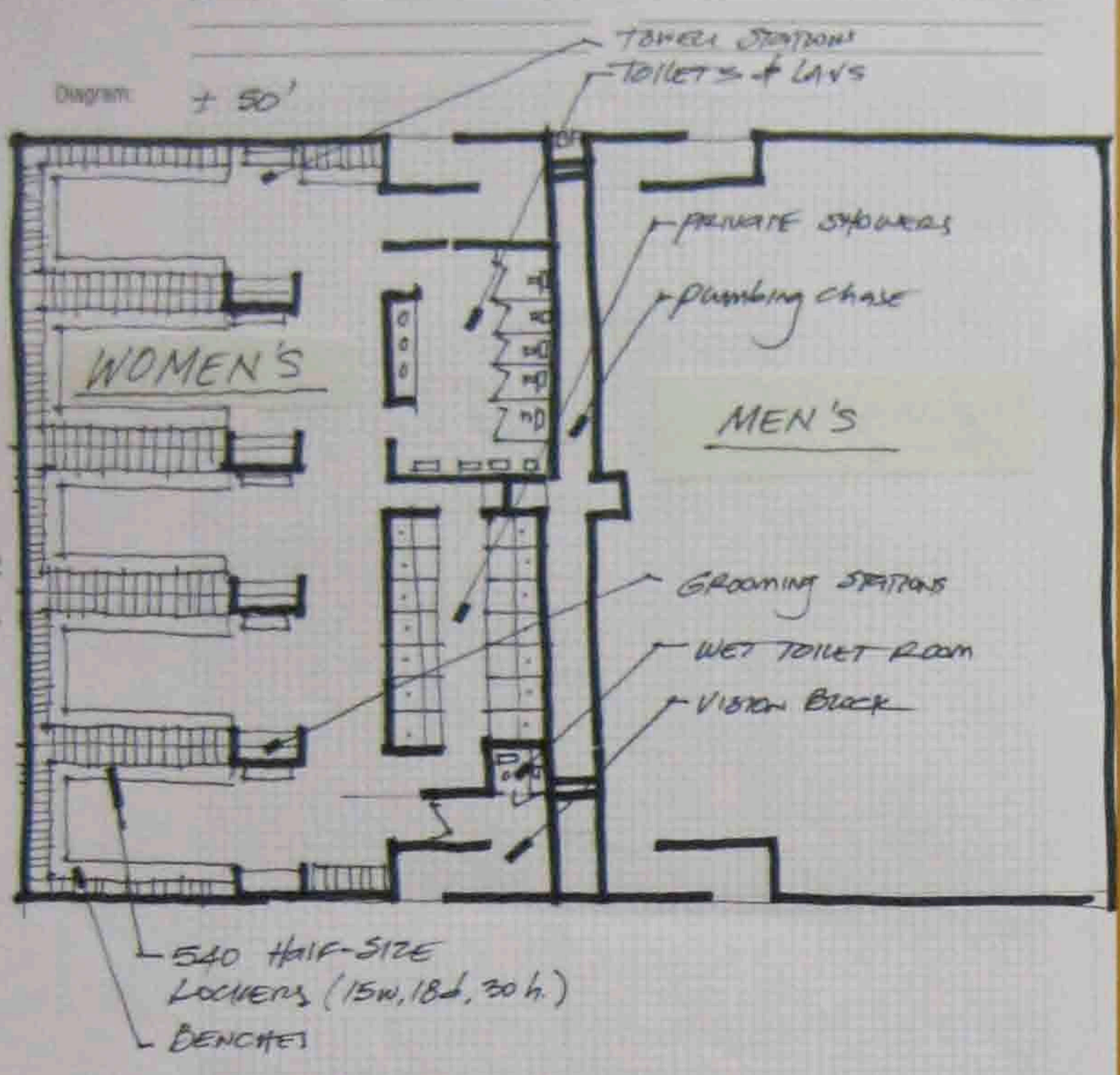
ACCESS TO KEYS FOR ROOMS

SATELLITE EQUIP ISSUE NEAR LOCKER ROOMS.

consider satellite for Basketballs.

PROGRAM DATA

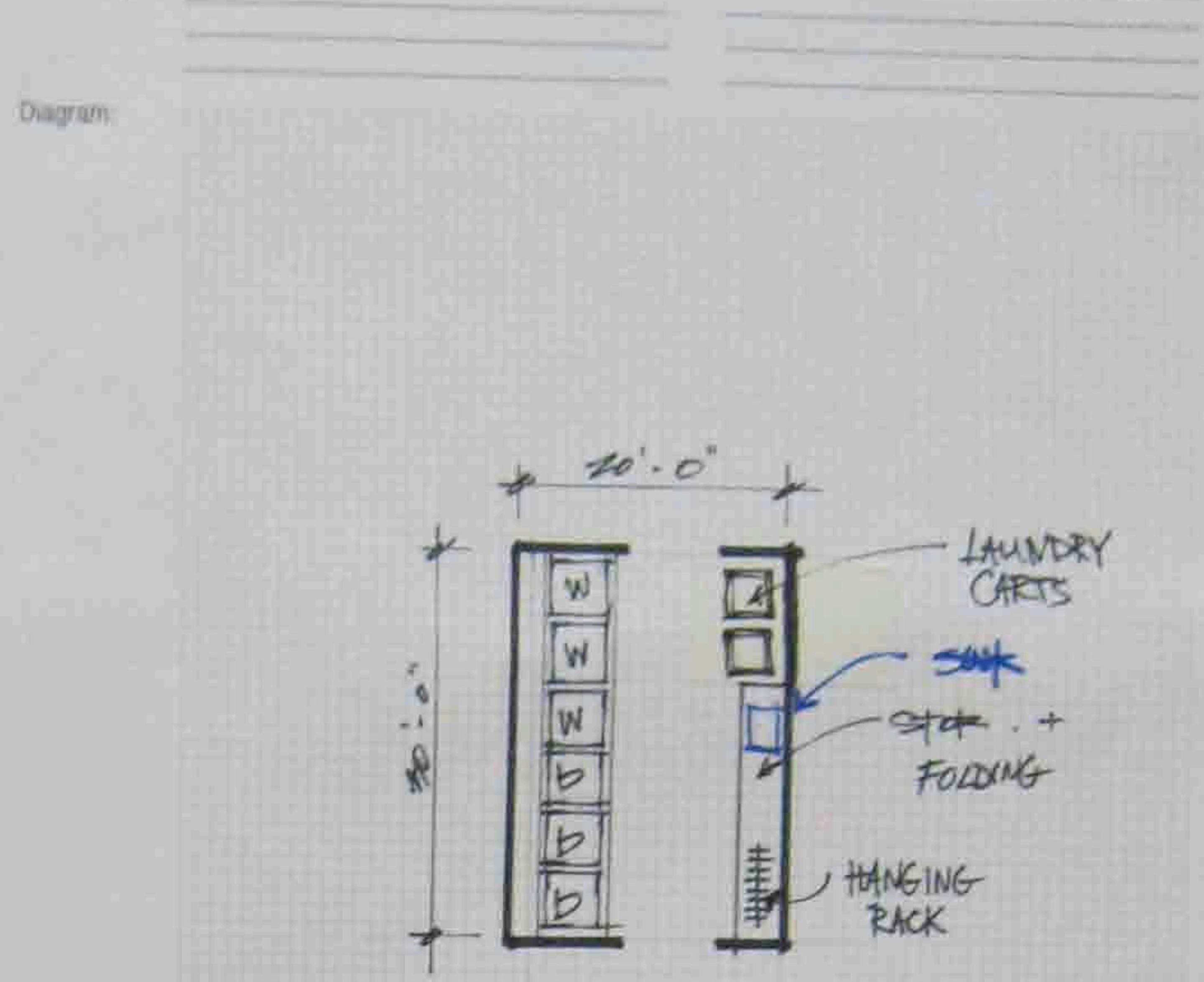
1. Activity Space: **LOCKERS - MEN'S**
Department: _____ AREA: **3,510 SF**
Description: **ADD 33% O**



Scale: 1" = 10'-0"

PROGRAM DATA

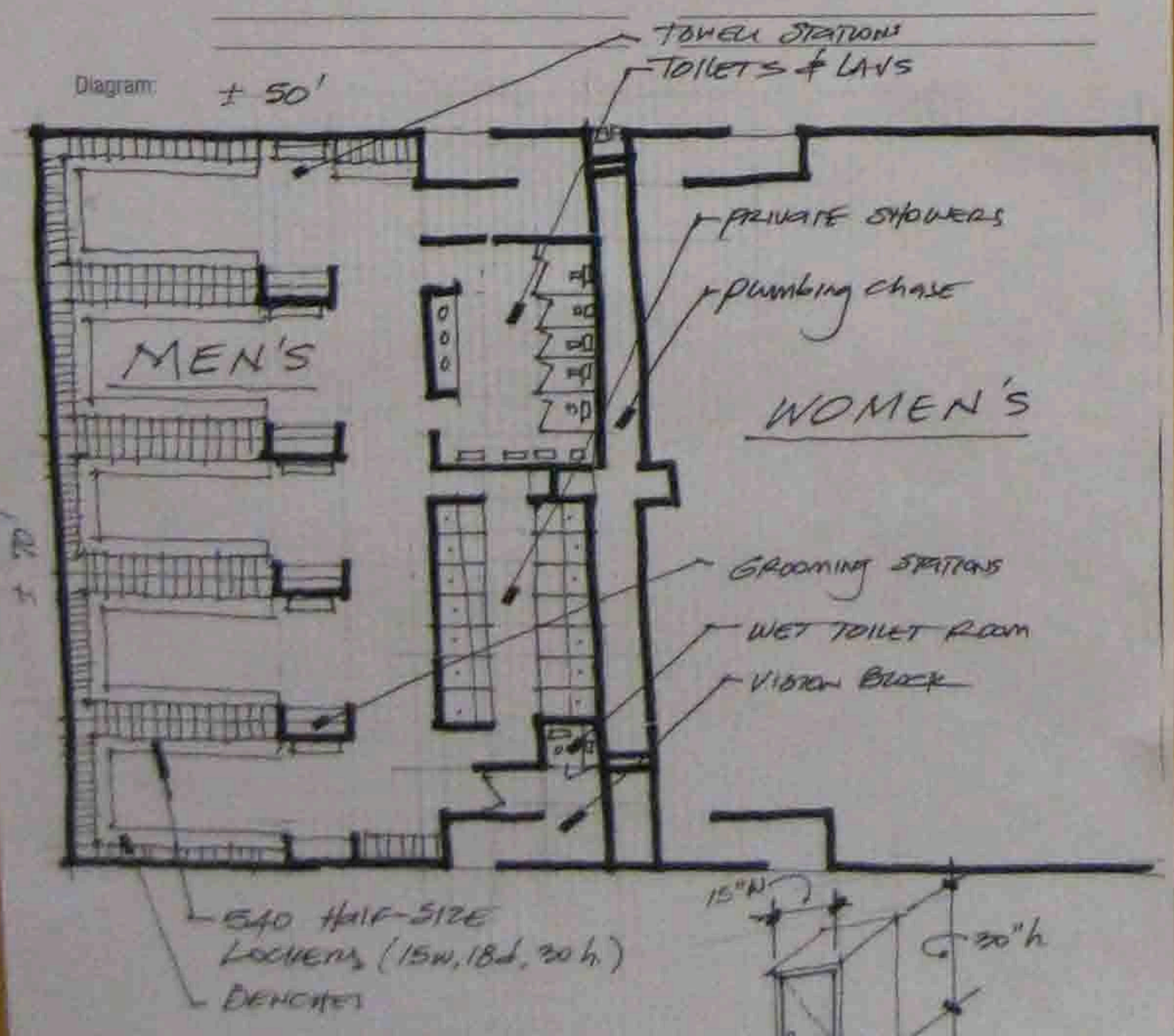
5. Activity Space: **LAUNDRY ROOM**
Department: _____ Area: **600 SF**
Description: **LOCKABLE SPACE WASHING + DRYING + FOLDING**



Scale: 1" = 10'-0"

PROGRAM DATA

1. Activity Space: **LOCKERS - WOMEN'S**
Department: _____ AREA: **3,510 SF**
Description: **ADD 33% O**



Scale: 1" = 10'-0"

